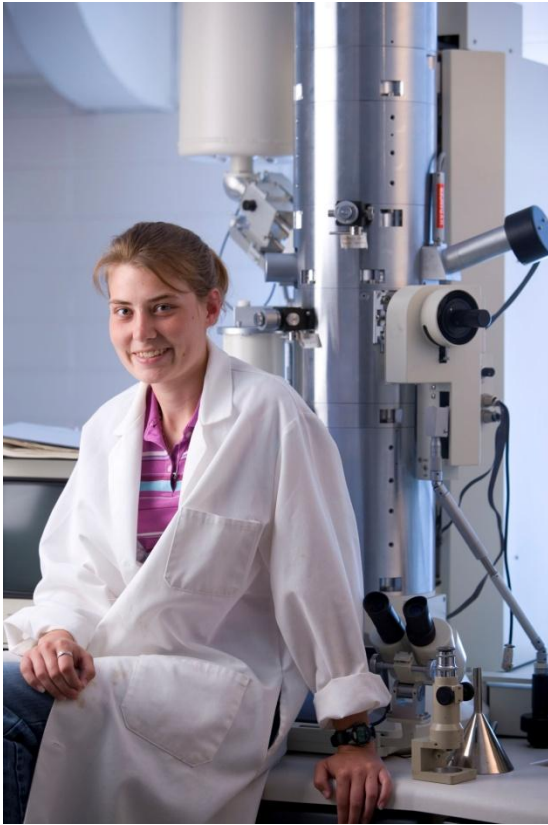


Graduate Study in Metallurgical Engineering

programs include those in nanoscience and nanoengineering and biomedical engineering.



Contact Information

Dr. Jon J. Kellar

Department of Materials and Metallurgical Engineering
Mineral Industries 112
(605) 394-2343
E-mail: Jon.Kellar@sdsmt.edu

Faculty

Douglas W. Fuerstenau Professor Kellar;
Professor Howard; Associate Professor Medlin;
Associate Professor Cross; Assistant Professor West; Professor Emeritus Stone; Distinguished Professor Emeritus Han; Research Scientist Hong.

Metallurgical Engineering

Students interested in pursuing graduate studies focusing on materials engineering and science, please see master of science in materials engineering and science. Other relevant graduate